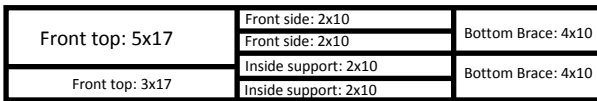
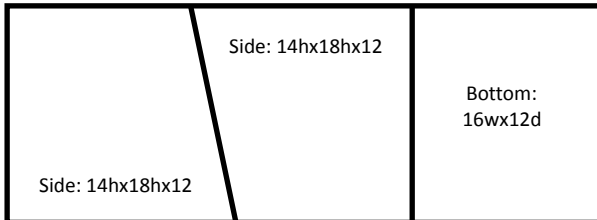
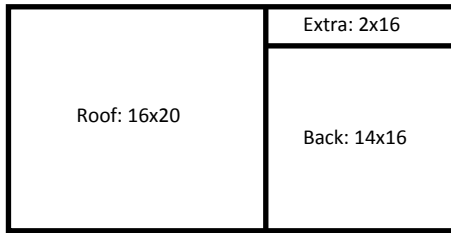


My Little Library Plan: Dale Melenberg



Solid wood material is preferred.

- ✓ 1X16 3 feet long
- ✓ 1X12 4 feet long
- ✓ 1X8 4 feet long
- ✓ Deck screws about 2 ½ inches
- ✓ Some screws about 1 ½ inches
- ✓ PL400 or wood glue as desired

Pre-drill all screw holes.

The roof slope is about 19°, but measure to make sure before doing any angle cuts on the table saw.

Construction Directions: Cut and build as you go.

Start with cutting the sides and bottom boards. Screw them together; placing the bottom board one half inch up.

Measure the inside width at the back of the library; cut that width out from the ‘roof-back’ piece of the 1x16, leaving you with the ‘roof’ piece.

Angle cut the top of the back piece, using the same angle cut as the slope of the roof. (+/-19°)

Screw the back board into place, inside the two side walls, lining up the angle cut at the top to match the sides.

Measure the front width of library, cut that length out from the 1X8, cut it lengthwise into two pieces – one 3 inches, the other 5 inches. Trim the top of the 5 inch piece at 19° to match the sides.

Measure the front height of the library, and cut that length from the 1X8. Then cut into four equal strips of about 2 inches each.

Lining up the top bar and bottom bar of the front, and measure the remaining length for two side pieces to fit precisely into that distance. Cut from two of the equal strips.

Measure inside height of library from bottom to top at the front, subtract for slope, and cut remaining two strips to that length as the inside support pieces..

Line up all the front outside pieces, and make the following choice: *do you want to see screws on the front of the library, or not?*

If not, then screw the inside supports to the front pieces from the inside, making sure to line them up nicely. Then with this ‘frame’ of pieces, put in place and attach to library screwing in from the sides.

If you are okay with visible screws, then proceed.

Cut the 19° angle on the roof board; to match the back, and add character to the front and sides. Line up the rear centering the roof over the sides, and fasten down with screws and glue.

The 2nd last piece to make is a decorative door flange which diverts water from dripping in through the door. Cut a strip of wood from the ‘extra’ piece at the same angle as the roof, and glue and screw (from the inside) into place using shorter screws.

The very last piece to make is the door – I suggest going to the local craft store and buying an 8X10 wooden picture frame (unstained pine – outside measurements +/- 11X13). Add hinges and knob... Stain or paint and you’re DONE!

The Finished Product

